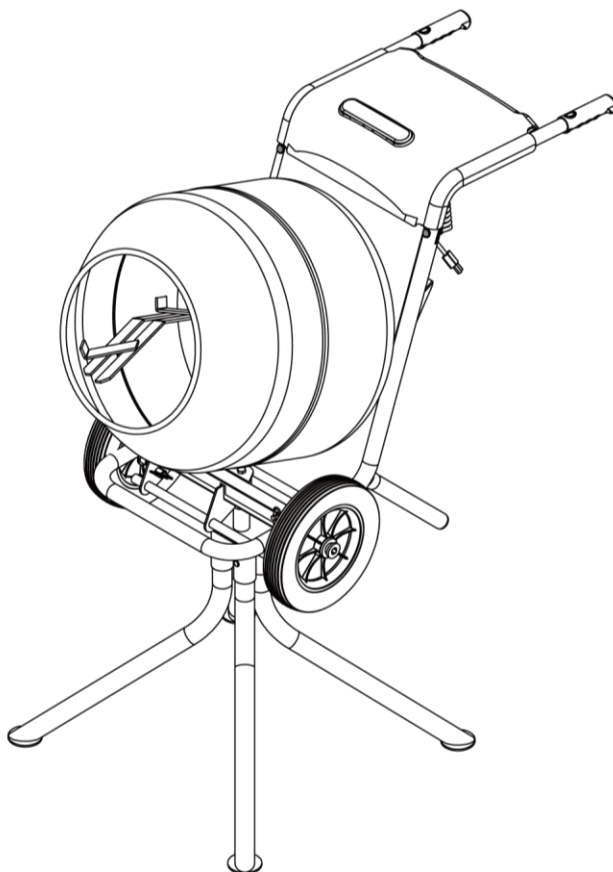




JCB-PRO CEMENT/CONCRETE MIXER 230V/110V INSTRUCTION & USER MANUAL



JCB-CM150E

JCB-CM150E-110

Original Instructions

IM-CM150E/110-EN



Contents

Introduction	Page Number
General Warning & Disposal	3
General Tool Safety Warnings	4
Machine Specific Warnings	5-6
Unpack, Tools Required for Assembly & Box Contents	7
Assembly	8
Handle Assembly	9-12
Wheel Assembly	9
Stand Assembly	10
Operation	11-12
Intended Use	13-16
General Operation	13
Working Positions	13
Tilt Lock Levers	14
Starting & Stopping	15
Mixing Tip	16
Maintenance & Care	16
General Cleaning	17-20
General Inspection	17
UK Plug	17
Cleaning the Drum	17
Storage	18
Transportation	18
Part Diagram	18
Parts List	19
Troubleshooting	20
Specifications	21
Warranty	22
Manual Updates	23
Returning Your Product	23
Leaving a Review	23
Ordering Spare Parts	23
Contact Us	24
CE Declaration of Conformity	25



Introduction

We work very hard to give all of our customers the best possible service. If you have any problems, before leaving negative feedback, please contact us to give us a chance to resolve the issue. We would be delighted if you left us positive feedback! Thank you for purchasing this product.

Important!



WARNING: READ THE INSTRUCTION BOOKLET THOROUGHLY BEFORE USING THE MACHINE.

Keep for future reference and pass it on if the machine is loaned or sold to another user.

This manual has been produced by JCB Tools, and should be kept with the product. Please read and understand these instructions before you use your product. Failure to do this may result in personal injury or damage to the product.

The safety precautions and warnings are to ensure your safety and protect you from harm or damage to the product.

The information contained in this manual was accurate at the time of production, however JCB Tools may make modifications to the product without notification.



GENERAL WARNINGS & DISPOSAL



To reduce the risk of injury, the user must read the instruction manual.



This symbol is used throughout this manual to warn the user about potential risks. Please read & understand these sections before using the device.



Personal Protective Equipment (P.P.E.), such as ear defenders, eye protection, safety gloves and a dust mask, must be worn during the operation of the device.



The device must not be immersed in water.



Do not allow any part of the device to come into contact with flames, or to catch fire.



Do not expose the tool to fire or excessive temperatures.



Do not dispose of batteries in household waste. Return exhausted batteries to a local collection or recycling point.



This product has been marked with a symbol relating to removing electric and electronic waste. The product should not be discarded with household waste but must be returned to a collection system which conforms to the EU Directive 2012/19/EU or the UK Waste Electrical and Electronic Equipment Regulations 2013. It will then be recycled or dismantled in order to reduce the impact on the environment. Electric and electronic equipment can be hazardous for the environment and for human health since they contain hazardous substances.

The month and year of manufacture can be found within the product serial number e.g. MMYYPXXXXXXX. Where production month (MM) and production year (YY) are included.

GENERAL TOOL SAFETY WARNINGS



WARNING!

Read all safety warnings, instructions and specifications provided with this power tool. Failure to follow all instructions listed below may result in electric shock, fire and/or serious injury. **Save all warnings and instructions for future reference.**

The term “power tool” in the warnings refers to your mains operated (corded) power tool or battery operated (cordless) power tool.

1. Work area safety

- **Keep work area clean and well lit.**
Cluttered or dark areas invite accidents.
- **Do not operate power tools in explosive atmospheres, such as in the presence of flammable liquids, gases or dust.** Power tools create sparks which may ignite the dust or fumes.
- **Keep children and bystanders away while operating a power tool.** Distractions can cause you to lose control.

2. Electrical safety

- **Power tool plugs must match the outlet. Never modify the plug in any way. Do not use any adapter plugs with earthed (grounded) power tools.** Unmodified plugs and matching outlets will reduce risk of electric shock.
- **Avoid body contact with earthed or grounded surfaces, such as pipes, radiators, ranges and refrigerators.** There is an increased risk of electric shock if your body is earthed or grounded.
- **Do not expose power tools to rain or wet conditions.** Water entering a power tool will increase the risk of electric shock.

- **Do not abuse the cord. Never use the cord for carrying, pulling or unplugging the power tool. Keep the cord away from heat, oil, sharp edges or moving parts.**
Damaged or entangled cords increase the risk of electric shock.
- **When operating a power tool outdoors, use an extension cord suitable for outdoor use.** Use of a cord suitable for outdoor use reduces the risk of electric shock.
- **If operating a power tool in a damp location is unavoidable, use a residual current device (RCD) protected supply.**
Use of an RCD reduces the risk of electric shock.

3. Personal safety

- **Stay alert, watch what you are doing and use common sense when operating a power tool. Do not use a power tool while you are tired or under the influence of drugs, alcohol or medication.** A moment of inattention while operating power tools may result in serious personal injury.
- **Use personal protective equipment. Always wear eye protection.** Protective equipment such as a dust mask, non-skid safety shoes, hard hat or hearing protection used for appropriate conditions will reduce personal injuries.
- **Prevent unintentional starting. Ensure the switch is in the off position before connecting to power source and/or battery pack, picking up or carrying the tool.** Carrying power tools with your finger on the switch or energising power tools that have the switch on invites accidents.

- **Remove any adjusting key or wrench before turning the power tool on.** A wrench or a key left attached to a rotating part of the power tool may result in personal injury.
- **Do not overreach. Keep proper footing and balance at all times.** This enables better control of the power tool in unexpected situations.
- **Dress properly. Do not wear loose clothing or jewellery. Keep your hair and clothing away from moving parts.** Loose clothes, jewellery or long hair can be caught in moving parts.
- **If devices are provided for the connection of dust extraction and collection facilities, ensure these are connected and properly used.** Use of dust collection can reduce dust-related hazards.
- **Do not let familiarity gained from frequent use of tools allow you to become complacent and ignore tool safety principles.** A careless action can cause severe injury within a fraction of a second.

4. Power tool use and care

- **Do not force the power tool. Use the correct power tool for your application.** The correct power tool will do the job better and safer at the rate for which it was designed.
- **Do not use the power tool if the switch does not turn it on and off.** Any power tool that cannot be controlled with the switch is dangerous and must be repaired.
- **Disconnect the plug from the power source and/or remove the battery pack, if detachable, from the power tool before making any adjustments, changing accessories, or storing power tools.** Such preventive safety measures reduce the risk of starting the power tool accidentally.

- **Store idle power tools out of the reach of children and do not allow persons unfamiliar with the power tool or these instructions to operate the power tool.** Power tools are dangerous in the hands of untrained users.
- **Maintain power tools and accessories. Check for misalignment or binding of moving parts, breakage of parts and any other condition that may affect the power tool's operation. If damaged, have the power tool repaired before use.** Many accidents are caused by poorly maintained power tools.
- **Keep cutting tools sharp and clean.** Properly maintained cutting tools with sharp cutting edges are less likely to bind and are easier to control.
- **Use the power tool, accessories and tool bits etc. in accordance with these instructions, taking into account the working conditions and the work to be performed.** Use of the power tool for operations different from those intended could result in a hazardous situation.
- **Keep handles and grasping surfaces dry, clean and free from oil and grease.** Slippery handles and grasping surfaces do not allow for safe handling and control of the tool in unexpected situations.

MACHINE SPECIFIC SAFETY WARNINGS

WARNING!

WARNING! When using electric tools basic safety precautions should always be followed to reduce the risk of fire, electric shock and personal injury including the following. Read all these instructions before attempting to operate this product and save these instructions

1. The owner must ensure that only qualified persons operate, maintain or repair this machine.
2. Before attempting any maintenance, switch off the motor, and isolate from the main power supply.
3. All portable electric appliances are dangerous if used incorrectly. This machine will operate on 230/110 volts. Check the power supply to ensure it corresponds to the voltage as indicated on the rating label.
4. It is advisable to always use as Residual Current Device("RCD"), (earth leakage trip), plugged directly into the 230/110 volt socket. If using an extension cable, plug it directly into the RCD.
5. If using an extension cable it must be no more than 20 metres in length, the wire section must be 1.5 mm². Ensure the extension cable is carefully laid out avoiding liquids, sharp edges and vehicles running over it. Do not allow the cable to become trapped underneath the mixer. Unroll it completely so the cable does not overheat. Ensure the cable connections (plug and socket) are dry and safe.
6. When not in use, store this machine in a dry, locked place. Keep away from children.
7. The 230/110 volt motor is IP44 protected.
8. Fitted with a NO VOLTAGE RELEASE switch - if power supply fails the machine will stop, re-start the mixer by pressing the green button.

Your JCB Concrete Mixer has been designed with safety in mind. However, as with any type of machinery, some basic DO's and DON'TS apply:

Do's :

- **ALWAYS OPERATE THE MACHINE ON A LEVEL SURFACE.**
- Have the drum rotating when discharging the mix.
- Wear protective clothing i.e. safety footwear, gloves, safety goggles, ear protectors etc.
- Use caution when assembling and transporting the mixer.
- Keep the drum free from debris and mortar build-up (clean after every use). Do keep all moving parts lightly greased (wheel axles, swivel brackets ...etc.)
- Periodically inspect your mixer for abnormal wear or damage.

Don'ts:

- Place your hand or hands in or around any part of the drum while it is rotating.
- Place any tools or implements in or around the drum while it is rotating.
- Operate the mixer on an uneven surface.
- Operate this machine on a steep gradient.
- Operate in close proximity to children or animals.
- Allow any persons under the age of 16 to operate the machine.
- Stop and start the mixer with material in the drum, this will damage the motor and gearbox.
- Allow water to contact the motor or electrical connections
- Wear loose fitting clothes, risk of entanglement with the mixer
- Operation under the influence of drugs or alcohol
- Operate this machine when it is being moved.

When discharging the mix, grip both handles firmly and tip mixer forward. Lock in the forward position by engaging the axle clip. Start the mixer by pressing the green switch on the motor.
Stop the mixer by pressing the red switch on the motor.



Unpack

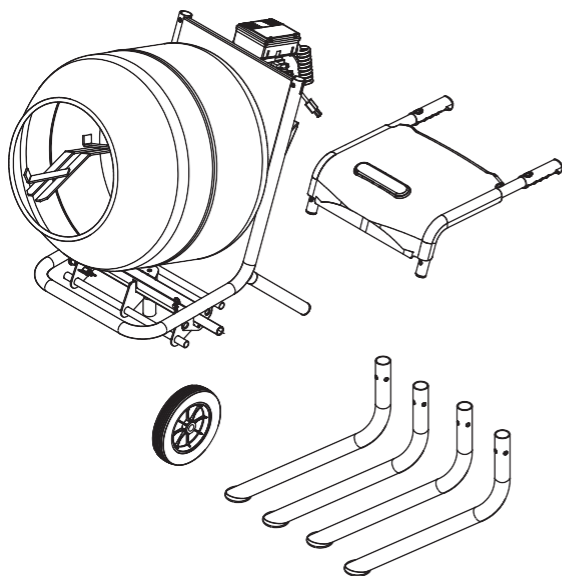
1. Unpack all parts and lay them on a flat, stable surface.
2. Remove all packing materials and shipping devices if applicable.
3. Make sure the delivery contents are complete and free of any damage. If you find that parts are missing or show damage do not use the product but contact your place of purchase. Using an incomplete or damaged product represents a hazard to people and property.
4. Ensure that you have all the accessories and tools needed for assembly and operation. This also includes proper personal protective equipment.

Tools required for Assembly

The following items are NOT included with the machine:

- Suitable PPE (gloves, eye protection etc..)
- Crosshead Screwdriver
- Spanners – 1x10mm, 1x13mm, 1x17mm, 1x19mm
- General Purpose Grease
- Hammer or Mallet

Box Contents



	R Clip $\Phi 3.4$	X2
	Bolt M8x45	X2
	Flat Washer M8	X2
	Nut M8	X2
	Hex.head bolt M10x25	X1
	Wheel bung	X2
	Pinned plate	X2

Handle Assembly

Insert the handle (38) into chassis (2) using Umbrella Bolt M8x45 (41), Flat washer M8 (40) and Nut M8 (39), Tighten securely.

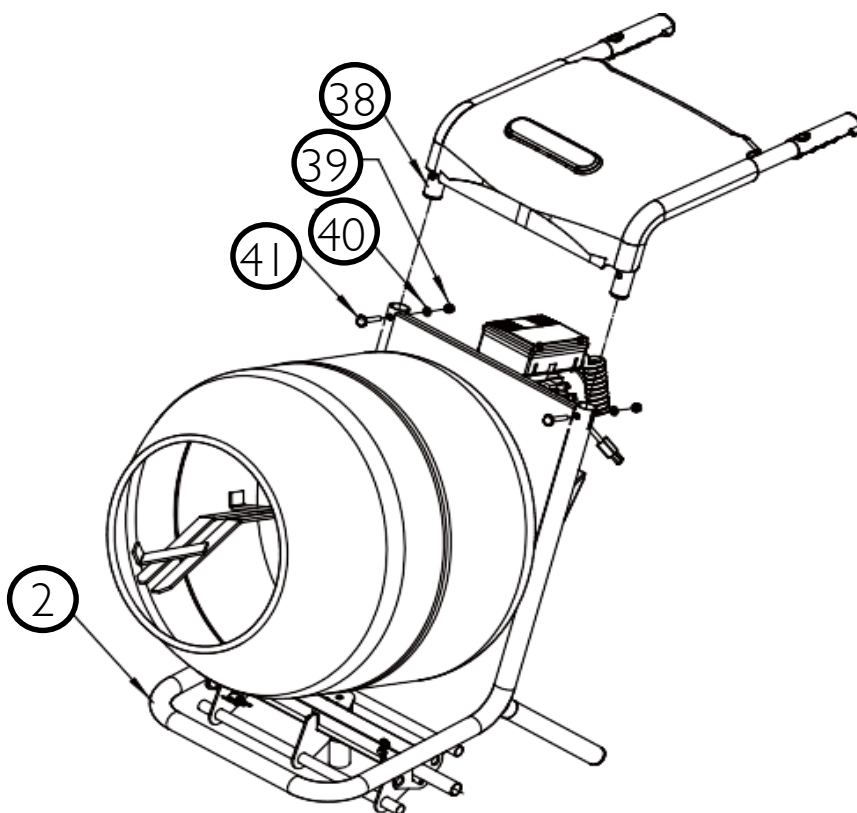
Umbrella Bolt M8x45 x2



Flat Washer M8 x2



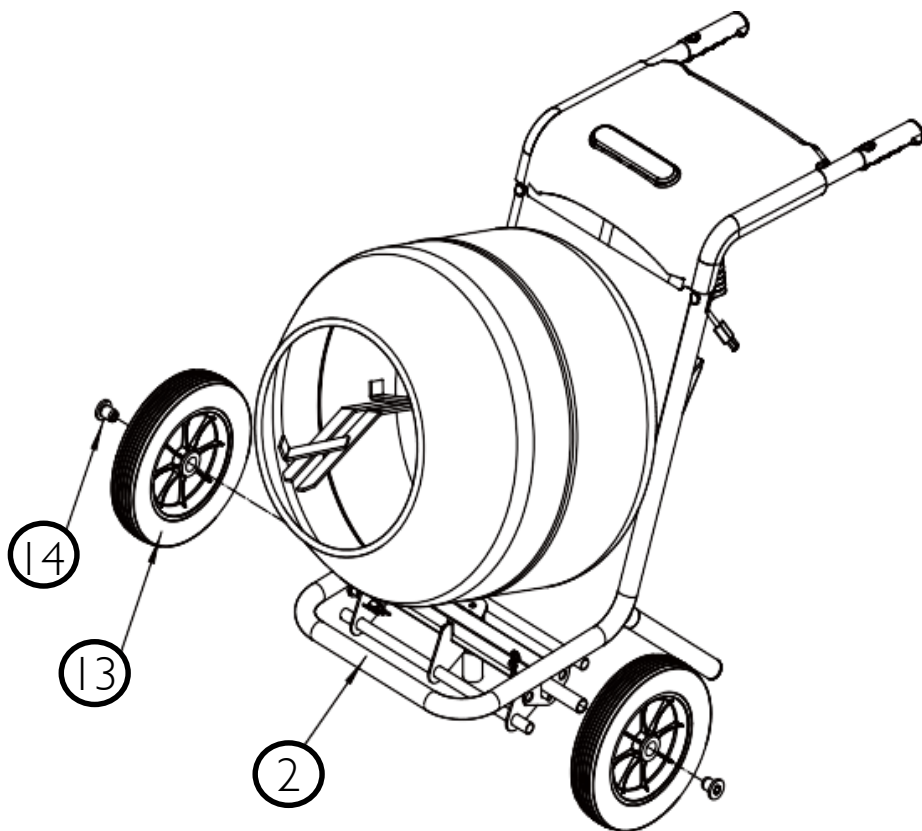
Nut M8 x2



Wheel Assembly

Slide the wheels (13) onto the axles and secure by banging in the wheel bungs (14) with a hammer or mallet.

Wheel Bungs



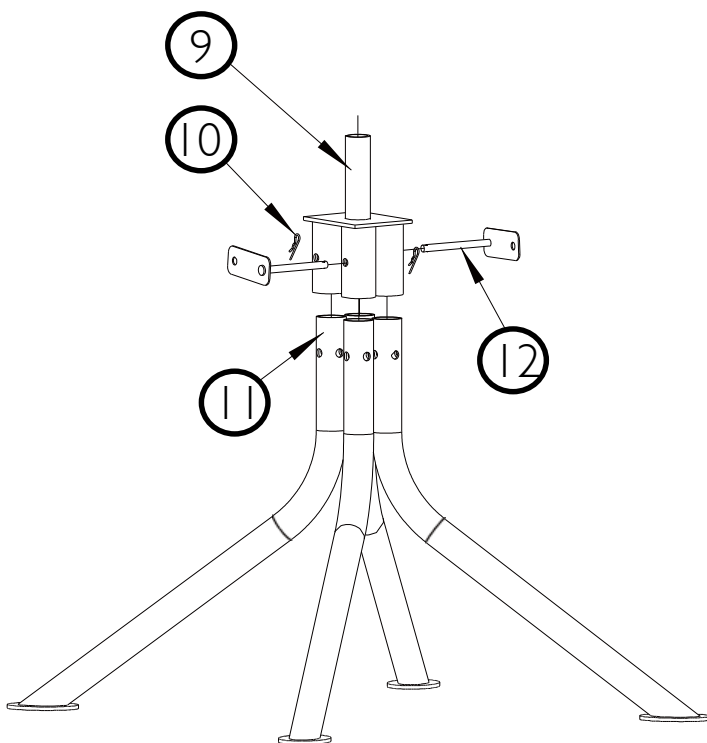
Stand Assembly

Insert the four feet (11) into the stand connector(9) and secure with two Pinned plates (12) and R-clips (10) provided.

R-clips x2



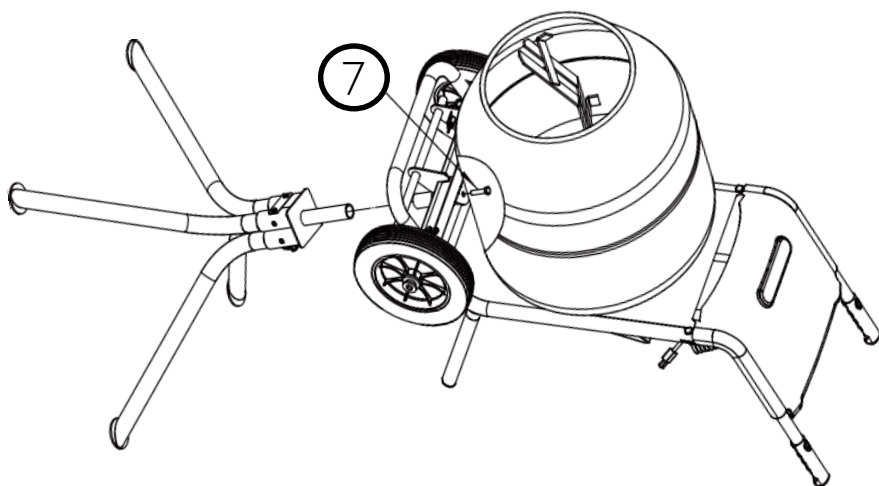
Pinned Plates x2



Stand Assembly

Mixing drum mouth facing up, locate the completed stand onto the axle, and secure with the Hex. Head bolt M10x25 (7). Pull the mixer handles back to tilt the mixer while leaving it on the floor. Then standing to one side of the mixer place one hand on the top lip of the drum mouth and one hand on the handle and lift the combined mixer and stand upright. You might require the help of a second person. Reverse the above actions to lower the mixer to the floor and remover the stand.

Hex-Head bolt M10x25



Operation

Intended Use

WARNING!

Check the rated output of your power source. It must match/comply with the information on the ratings label of the specific mixer you intend to use.

JCB-CMI 50E & JCB-CMI 50E-110V are designated with a rated input of 110 & 230V at 50Hz, powering a 550W motor. It's only suitable to be used for mixing cement, water and aggregates up to the maximum mixing capacity specified. This product must not be used for any purposes other than those described.

General Operation

- > Check the product, its power cord and plug as well as accessories for damage before each use. Do not use the product if it is damaged or shows wear.
- > Double check that accessories are properly fixed.
- > Always hold the product by its handle. Keep the handle dry to ensure safe support.
- > Ensure that the air vents are always unobstructed and clear. Clean them if necessary with a soft brush. Blocked air vents may lead to overheating and damage the product.
- > Switch the product off immediately if you are disturbed while working by other people entering the working area. Always let the product come to complete stop before leaving it. Do not overwork yourself. Take regular breaks to ensure you can concentrate on the work and have full control over the product.

WARNING!

Keep a safety distance of 1m from the front of the machine when discharging.



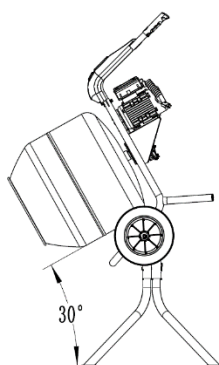
Working Positions

The mixer has 3 working positions:

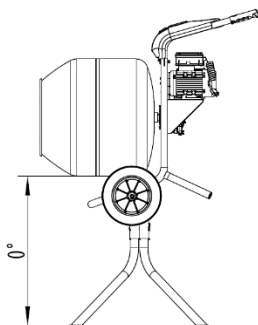
Loading & Mixing - Use this position when loading the machine. Suitable for wet mixing i.e. Concrete and Mortar

Discharging – Put the machine into this position when mixing is finished. Put a wheel barrow or suitable container at the mouth of the mixer and tilt.

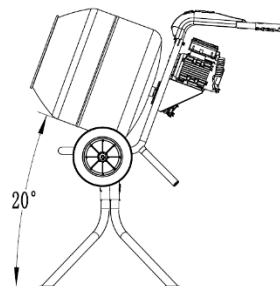
Neutral – This position can be used for dry mixing. As the angle is neutral it can reduce the amount of airborne dust



Discharging



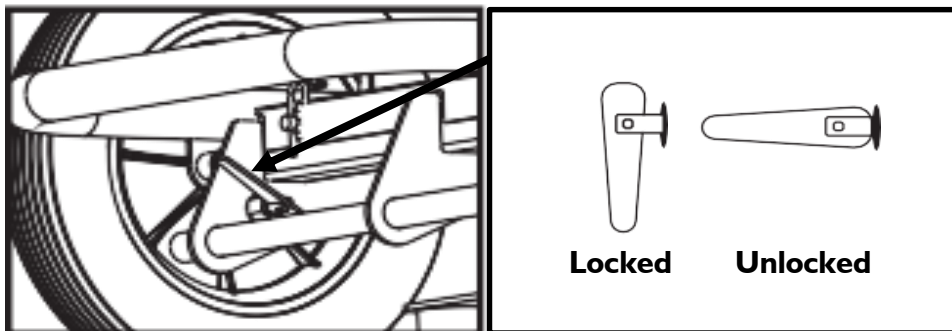
Neutral



Loading

Tilt Lock Levers

The mixer has 2 Tilt Lock Levers (front & rear) to safely lock the machine into different working positions. To adjust the working position, use the following Tilt Lock Lever configurations:



Loading (Working)

In the loading and working position, both the front and rear lock levers should be in the unlocked positions.

Discharging

Tip the mixer forward to discharge, put the front lock lever in the locked position. This prevents the mixer swinging back when discharging. The rear lock lever can remain unlocked.

Neutral

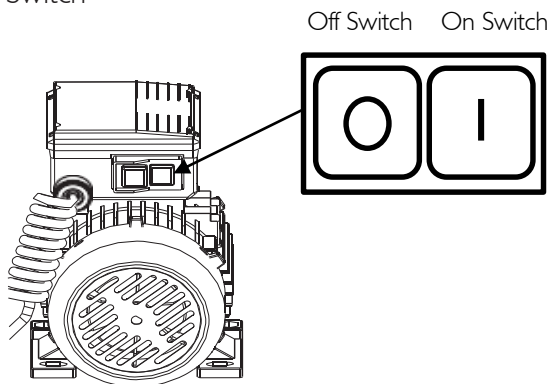
To secure the mixer in the Neutral position, unlock both levers and put the mixer into the loading position. Then lock the rear lever and tip the mixer forward until you hear an audible *click*. The mixer will now rest on the rear lever allowing for dry mixing or refuelling.

Starting & Stopping

WARNING!

NEVER put any body parts or tools into the machine during operation. This can cause human harm and damage the machines drum and mixing blades.

- > Connect the machine's power cable to a suitable power outlet, ensuring the power source is switched off.
- > Turn the power source on, the machine is now ready to use.
- > To start the machine press the On Switch. When finished mixing, to stop press the Off Switch



To obtain the best mixing results

- > Start the mixer completely empty
- > Add water, this will prevent contents sticking to the drum
- > Add cement
- > Add your sand/aggregate etc.

Allow the mix to fully combine before adding any more water or cement.

Maintenance & Care

WARNING!

Always switch the machine off to perform any maintenance. Remove power cable from power source and allow machine to cool down before performing any maintenance or inspection.

Only perform repairs/maintenance outlined in this manual. Any additional repairs will need to be repaired by a qualified professional.

General Cleaning

- > Clean the machine with a dry cloth. Use a brush for areas that are hard to reach. In particular clean the air vents after every use with a cloth and brush.
- > Remove stubborn dirt with high pressure air (max 3 bar).

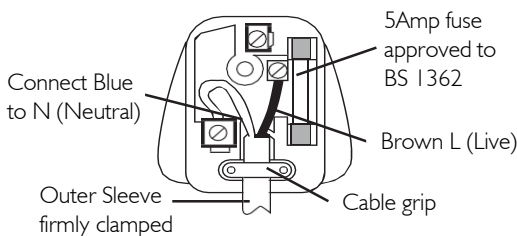
General Inspection

Inspect the machines components before and after every use. Visually check all the electrical parts and components. IF there's any damage to power cord, this must be repaired by the manufacturer.

UK Plug

The colours of the wire in the mains lead of this appliance may not correspond with the coloured markings identifying the terminals in the plug, proceed as follows. The wire, which is coloured blue, must be connected to the terminal, which is marked with N or coloured black. The wire, which is coloured brown, must be connected to the terminal, which is marked L or coloured red.

- > No connection is to be made to the Earth terminal of the plug.
- > Only fit an approved 5Amp BSI 363iA plug and the correct rated fuse.
- > If in doubt, consult a qualified electrician.
- > NOTE: If a moulded plug is fitted and has to be removed take great care in disposing of the plug and severed cable, it must be destroyed to prevent engaging



Cleaning the drum

- > Clean the machine after every use. When you are finished with mixing, rinse the inside of the drum to loosen up all debris. IF there's more stubborn material stuck to the inside of the drum carry out the following:
 1. Put the machine into the loading position and turn on.
 2. Add water, then add aggregate or small gravel chippings.
 3. Let this mix until all the material from the inside of the drum has been removed.
 4. Tilt the machine forward and discharge the contents. Always discard contents responsibly.
- > Dry the machine as best as possible after each clean. This will help prevent any corrosion or rust.
- > Ensure any aggregate or stones are not stuck into the mixing blades. After each use, with the machine off check the mixing blades are free of any debris.

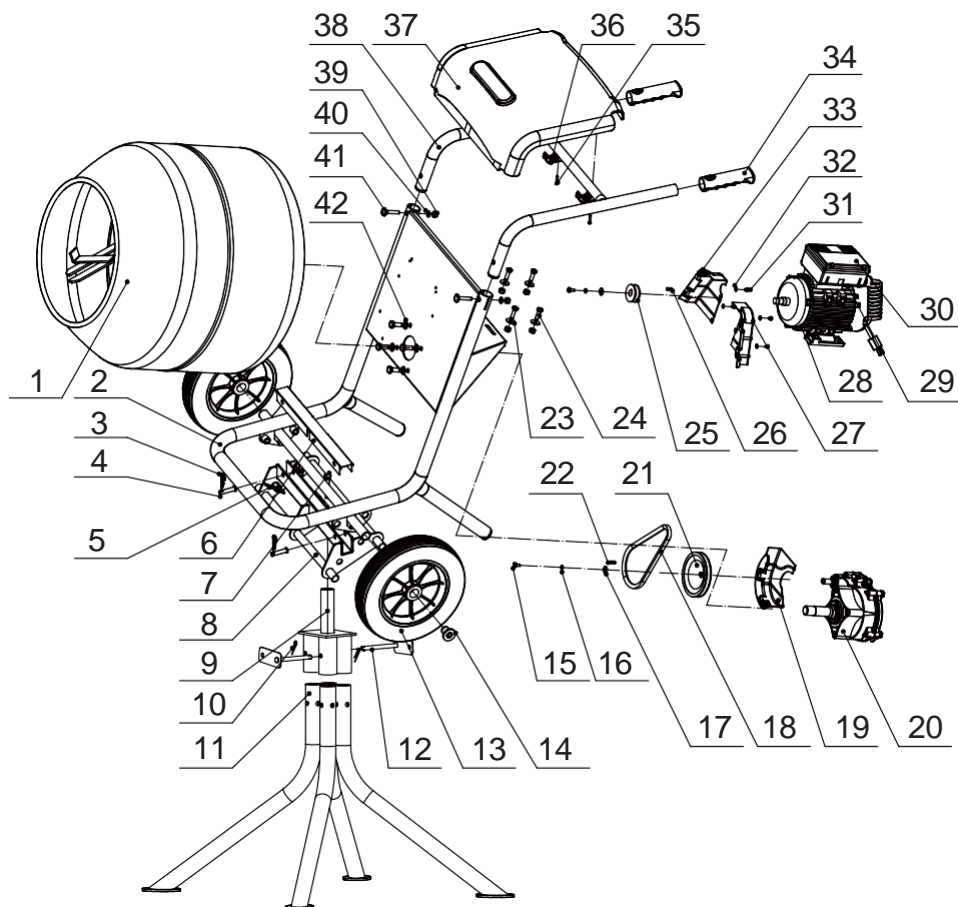
Storage

- > Store the machine and its accessories in a dry, frost-free place.
- > Always store the machine in a place that is inaccessible to children. The ideal storage temperature is between 10 and 30°C.
- > we recommend using the original packaging for storage or covering the product with a suitable material to protect it against dust

Transportation

- > Switch the machine off and disconnect it from power supply before transporting.
- > Always carry the machine by its handles.
- > Protect the machine from any heavy impact or strong vibrations which may occur during transportation in vehicles.
- > Secure the machine to prevent it from slipping or falling over.

Parts Diagram



Parts List

No.	Description	Q'ty	No.	Description	Q'ty
1	Mixing Drum	1	22	Key 4.8x14	1
2	Chassis	1	23	Big Washer M8	4
3	R Clip Φ 2	2	24	Hex.head bolt M8x25	4
4	Pin Φ 10x42.5	2	25	Small pulley	1
5	Lock pin	2	26	Key 4.8x18	1
6	Swivel unit Cover	1	27	Belt cover-L	1
7	Hex.head bolt M10x25	5	28	Motor	1
8	Stand tilt/Swivel unit	1	29	Switch washer	1
9	Stand connector	1	30	Switch box assembly	1
10	R Clip Φ 3.4	2	31	Cross Headed Screw M5x6	6
11	Stand	4	32	Plate Washer M5	6
12	Pinned plates	2	33	Belt cover-R	1
13	Wheel	2	34	Hand grip	2
14	Wheel bung	2	35	Tapping screw ST4.8x25	2
15	Hex.head bolt M6x16	1	36	Block	2
16	Spring Washer M6	1	37	Motor cover	1
17	Circlip	1	38	Handle	1
18	Belt	1	39	Hex.head bolt M8	6
19	Belt cover-U	1	40	Flat Washer M8	2
20	Gearbox assembly	1	41	Umbrella nut M8x45	2
21	Big Pulley	1	42	Flat Washer M10	4

Troubleshooting

Problem	Possible Cause(s)	Correction
Motor trips out repeatedly	<ol style="list-style-type: none"> 1. Motor Overloaded 2. Extensions cord too long 3. Extension cord load rating too low 	<ol style="list-style-type: none"> 1. Empty Mixer 2. Do not use a power cord longer than 20m 3. Do not use cord with a gauge less than 0.75mm²
Mixer is plugged in but does not start	<ol style="list-style-type: none"> 1. Disconnected plug 2. Damage/corroded plug 3. Defective motor 	<ol style="list-style-type: none"> 1. Connect plug to power outlet 2. Refer to section on changing plug 3. Contact customer helpline
Motor starts but drum does not turn under load	<ol style="list-style-type: none"> 1. Starting motor with too much load in the drum 2. Motor too cold 	<ol style="list-style-type: none"> 1. Empty load, start mixer empty, then refill 2. Motor will not start properly below 0°C (32°F)


WARNING!

In the event of the motor overheating, and your motor is shutting down turn the power off, and unplug the machine for 15 minutes. Empty the mixer. After allowing the machine to cool down, plug the machine back in and turn it on. If the drum is turning as expected, continue use.



Specifications

Model	JCB-CM150E & JCB-CM150E-110
Max Drum Capacity (L)	134
Max Mixing Capacity (L)	100
Drum Diameter (cm)	60
Discharge Outlet Height (cm)	104
Wheels (cm)	30.0 x 8.0
Operating Dimensions (cm)	143 x 130 x 73.5
Storage Dimensions (cm)	94 x 65.5 x 87.5
Weight (kg)	68
Motor Type	Single Phase Electric
Rated Power (W)	550W
Voltage (V)	230 or 110
Frequency (Hz)	50
Motor Speed (RPM)	2880
Drum Speed (RPM)	25-28
Water Protection Rating	IP44
Sound Power Level LWA (dbA)	84.5
Guaranteed Sound Power Level (dbA)	92.0

Warranty

Proof of purchase will be required before you make a warranty claim. Full warranty terms and conditions can be found on the support website:

www.jcb-tools.co.uk

Manual Updates

Our manuals are constantly being reviewed and updated. Should you find an error, omission or something unclear, please contact us for assistance. We reserve the right to make any modifications without prior notice whenever necessary.

Our latest manuals are also placed online. All our manuals can be downloaded at: www.jcb-tools.co.uk

Returning Your Product

If you are returning your product, please contact the dealer for their returns policy.

Leaving a Review

We work very hard to give all of our customers the best possible service. If you have any problems, before leaving negative feedback, please contact us to give us a chance to resolve the issue. We would be delighted if you left us positive feedback! To leave a review, please go to: uk.trustpilot.com

Ordering Spare Parts

You can find the spare part you are looking for at power-spares.co.uk

Contact Us

Need Help? Talk To Our Experts

Our friendly aftersales team will be more than happy to help you.



Phone

Call our team on 01646 687 880



Email

aftersales@genpower.co.uk



Post

JCB Tools, Isaac Way, Pembroke Dock, Pembrokeshire, SA72 4RW.



Support Website

Go to www.jcb-tools.co.uk

CE DECLARATION OF CONFORMITY

We,
JCB Tools

Declare that the product:

Description
110V & 230V 550W Mixer
Type
JCB-CM150E & JCB-CM150E-110
Function
Mixing Concrete, Water & Stones

Complies to the Following Directives;

EC Machinery Directive - **2006/42/EC**
EMC Directive - **2014/30/EU**
Low Voltage Directive - **2014/35/EU**
EC RoHs Directive – **2011/65/EU 201/863**
WEEE Directive – **2012/19/EU**

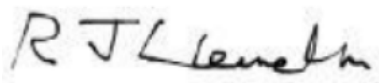
Complies to the following Requirements and Documents;

EN 12151:2007
EN 60204-1:2018
EN ISO 12100:2010
EN IEC 55014-1:2021
EN IEC 55014-2:2021
EN IEC 61000-3-2:2019+A1:2021
EN 61000-3-3:2013+A1:2019+A2:2021

The person authorized to compile this technical file:

Date: 01/02/2024

Signature



Name/ title: Roland.J.Llewellyn / Managing Director
JCB Tools are a Licensee of J.C.Bamford Excavators Ltd, operated via Genpower Ltd.
Address: JCB Tools, Isaac Way, Pembroke Dock, SA72 4RW