

How to replace the injector pump on the Hyundai DHY11KSEm.

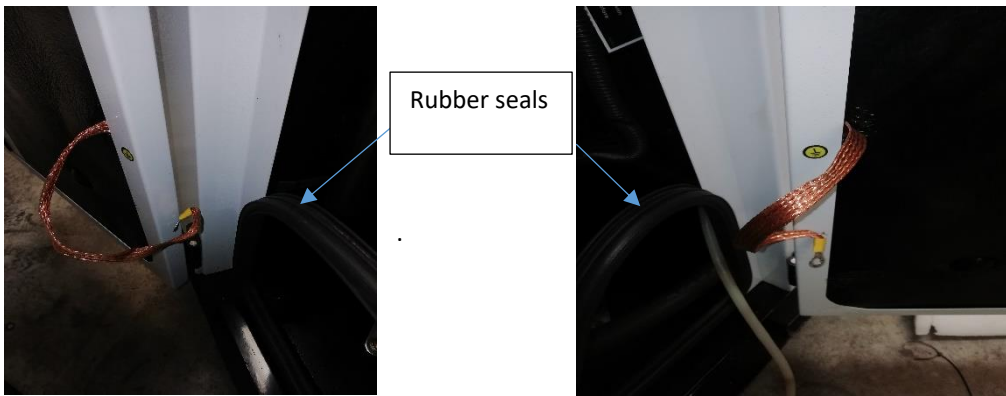
1. Drain the coolant from the machine. There are two drain pipes, one from the engine and one from the radiator. The coolant drain pipe on the engine is located by the fuel injector pump and the radiator drain pipe is located underneath the radiator on the right hand side.



2. Undo the inspection plate next to the exhaust and undo the bolts on the exhaust to allow the exhaust system to be removed, as shown on the diagram below.



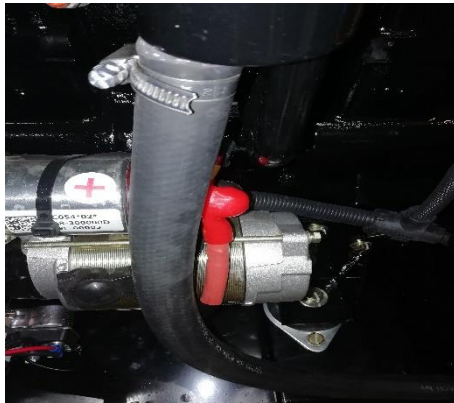
3. The doors are fitted with earth straps, undo the earth strap and remove the rubber door seal on both sides. You will notice the canopy comes in sections.



4. Inside the machine you will see the nuts and bolts securing the canopy lid. Undo all the nuts and bolts including the ones at the top at the exhaust end. There are also two nuts and bolts outside on top of the canopy near the lifting hook stickers to undo, then remove the canopy lid. The machine should now look like this:



5. Remove the breather pipe which is attached from the engine to the canopy. It is located just above the starter motor.



6. Everything should now be detached from the canopy. On the outside of the machine at the bottom located on the base you will see nuts and bolts. Undo all the nuts and bolts. Then remove the canopy on the radiator end.



7. Undo the top radiator hose.



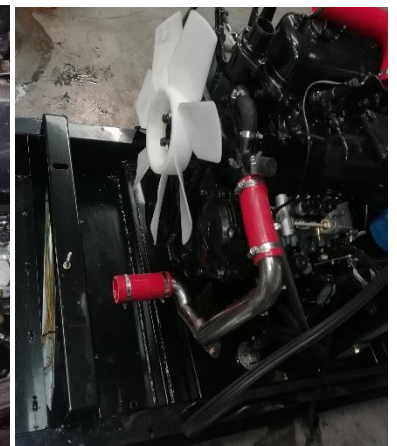
8. Remove the cable ties on the belt guard and undo all the nuts and bolts on the guard and remove.



9. Undo the nuts at the bottom of the radiator. Then undo the bottom radiator hose.



Take off the pipe on the radiator



10. With the radiator removed, you can access the back of the fuel pump. Remove the cover to reveal the timing gears.



11. On the timing gears you will see these markings. On the fuel pump gear is marked with a '1', and on the other gear you will see '0 0', '1 1', '2 2'. Release the injector pipes to release the pressure. Using a socket on the pulley you can rotate the gears. You will need to keep turning the gears until the marking '1' on the fuel pump gear is between the '1 1' marking on the other gear. This must be done before removing the old pump so you know the timing is aligned before installing the new pump.



12. To remove the injector pump undo all the pipes attached (there will be fuel in these pipes and the pump, so be sure to catch this in a suitable container) undo the 3 x13mm bolts securing the pump to the engine block. The pump shaft is an interference fit with a key way. Use a pullers to prise the pump off. Install the new pump, ensuring the key is aligned with the shaft.



13. To reassemble, repeat the above in reverse.